



National Centre for  
OUTDOOR RISK & READINESS

# CASE FOR SUPPORT

---

Join us in making outdoor adventures in Australia  
safer in the face of an ever changing climate.







## INTRODUCTION

Outward Bound Australia (OBA) and the Australian Outward Bound Development Fund (AOBDF) are delighted to share with you the National Centre for Outdoor Risk & Readiness (NatCORR).

NatCORR's purpose is to: build capacity & capability; to be able to predict, prepare for, mitigate & respond to events; to learn & adapt to become more resilient & safer in the face of a changing climate.

Our aim is to enable all Australians and visitors, wherever they live and whatever their age, ability and cultural background, to be able to enjoy and benefit from being in the outdoors and feel safe in doing so.

NatCORR, is a collaborative initiative by outdoor practitioners across Australia, was initiated by OBA and will be lead as a project under OBA governance, with support from an Industry Advisory Board.

## ABOUT OUTWARD BOUND

Established in 1956, Outward Bound Australia (OBA) is the heart and heritage of outdoor education in Australia.

Outward Bound Australia is a member of the global association, Outward Bound International, with members currently operating in more than 30 countries.

In its 60-year history it has provide outdoor adventure learning experiences for around 500,000 Australians, providing opportunities for personal growth, service to others and connection to the natural environment. OBA programs span school camps, through a range of open enrolment programs for young people and families, and Duke of Edinburgh Award journeys. We also deliver partnership programs that include leadership, professional development, adventure therapy and bespoke programs for disadvantaged groups. Many of these programs are funded by philanthropic grants and donations through our subsidiary AOBDF.

OBA has facilities at Tharwa, ACT, the Snowy River in Victoria, Walpole WA and other mobile expedition locations in National Parks. These are the beautiful and biodiverse lands of Australia's First Nations peoples who have brought care for the environment and a rich culture to Australia for millennia. We acknowledge and deeply respect their past, present and future contributions to the environment in which we work.

However, a changing climate threatens this environment and our work. This was painfully brought home at OBA during Australia's 'Black Summer' of 2019-2020.



## A BLACK SUMMER – THE IMPETUS FOR CHANGE

The devastating bushfires of 2019-2020 shocked Australians and the world but for OBA and many people and communities the effects were profound.

Overall, around 80% of our operational areas were bushfire affected, with many areas to remain closed for more than a year. The ACT Orroral Valley fire threatened OBA's National base at Tharwa and destroyed its major outdoor education program circuits throughout Namadgi National Park. The bushfires caused programs cancellations, introduced additional risks from tree falls, erosion, flooding and volatile weather events, and added costs to scout new areas for safe camping and hiking.

OBA was not alone facing these issues. Many other outdoor businesses were destroyed or impacted by the bushfires in 2019-2020, for others the intense rains and flooding of 2021-2022 were devastating.

These environmental challenges were compounded by the effects of COVID-19 with lockdowns and travel restrictions preventing participants travelling across State borders, and staff movement restricted to areas that were able to operate.

Recognising that the effects of a changing climate will continue to add significant risks, OBA has acted to increase the resilience of its facilities and programs and the capabilities of its people through it's "Reimagining Outward Bound Australia" strategy.

Knowing that the risks associated with climate change are shared with others across a dispersed, localised outdoor education and recreation sector, OBA has initiated NatCORR – a coordinated, national program of research, capacity building and skills development to manage and reduce the risk and impact the changing climate brings across the sector.





An aerial photograph of a river with a sandy bar in the middle. The water is a murky brown color. On the left bank, there are several trees with bright yellow and orange autumn foliage. The right bank is also lined with similar trees. The overall scene is a natural landscape in autumn.

## NATCORR'S PURPOSE

Millions of individuals, groups, school students, families and tourists **visit and enjoy Australia's natural environment**. However, the **impacts of climate change** are adding significant risk to these fundamental **life experiences** and to the outdoor practitioners who enable them.

The National Centre for Outdoor Risk and Readiness is a collaborative initiative by outdoor practitioners across Australia. Our aim is: to build capacity & capability; to be able to predict, prepare for, mitigate & respond to events; to learn & adapt to become more resilient & safer in the face of a changing climate; so that all Australians and visitors, wherever they live and whatever their age, ability and cultural background, are able to enjoy and benefit from being in the outdoors and feel safe in doing so.



National Centre for  
OUTDOOR RISK & READINESS





# CHAIRS INVITATION

In 2020 Outward Bound lost 3 operational areas to bushfires with devastating impact – the clean-up was a massive job; insurance under-delivered and accessing government support was time consuming and resource-demanding.

It's a long and ongoing road to recover and renew.

Outward Bound Australia is not alone in this issue.

Millions of Australians, school students, families and tourists visit and enjoy our natural environment! for school camps, holidays, recreational sports and activities, relaxation, wellbeing, and adventurous expeditions.

Outdoor education and recreation service providers across Australia provide a critical means for many to access, experience and enjoy the benefits of being in nature.

However, bushfires, floods and extreme weather events are increasing in number and impact in Australia.

To adequately mitigate the risk for communities and for outdoor practitioners there is a need for a coordinated, national program of research, capacity building and skills development to manage and reduce the risk and impact the changing climate brings.

This is NatCORR.

Outward Bound Australia has been successful in securing a \$3.7m grant from the Federal Government towards a \$7m National Centre for Risk and Readiness to address these issues, providing the centre with a “home” and three years of programs across 4 Key Workstreams.

These programs will help outdoor professionals to:

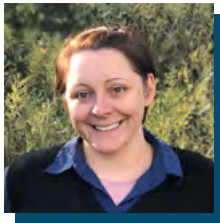
- Access, understand, monitor & respond to weather & changing environmental conditions;
- Assess risk, plan for responses & manage incidents;
- Minimise natural ecosystem impacts & aid ecosystem recovery & resilience.
- Evaluate & prepare for safe access & operations in volatile & impacted environments; and
- Be economically & socially resilient & responsive in volatile & climate change impacted contexts.

Please join us in a conversation about your interests in the National Centre for Outdoor Risk and Education (NatCORR) and help us to realise the global potential of this program.



*Loren Miller*

Dr Loren Miller  
Executive Director & Co-Chair  
Outward Bound Australia  
NatCORR Project Leader



*Jessica Bulger*

Jessica Bulger  
Co-Chair  
Outward Bound Australia



*Simon Lewis*

Simon Lewis  
Chair  
Australian Outward Bound  
Development Foundation

## KEY STATISTICS

National Parks provide a major boost to Australia's economy, with nature-based tourism bringing **\$23 billion** into the country every year.

By contrast, the estimated annual health services value of Australia's national parks is around **\$145 billion (\$US100 billion)** a year.

More than **180,000** students in Victoria alone visit parks each year to participate in education programs.

Protected areas provide a water catchment and filtration service, improving water quality for drinking, agriculture & industry.

Evidence shows school outdoor education programs and camps significantly reduce anxiety and increase confidence.

Australians spent a total of **54.5 million** nights caravan & camping in the year ending March 2020, a **6.5%** increase over 2019.

**35.5 million** people visit NSW's national parks each year. In Victoria, there are **50 million** visits to national, state and metropolitan parks every year, **45 million** visits to piers and jetties and **17 million** visitor nights from tourists



## THE CHALLENGE

The impacts of climate change are being felt across Australia causing significant disruption, risk and added costs.

Outdoor education & recreation practitioners provide, for many, a safe place to learn about & experience the outdoors which empowers them to explore the environment themselves.

These practitioners are generally located near their local outdoor environment and draw heavily on their knowledge of that location.

Consequently, they are dispersed. Additionally, the non-profit nature of most of the sector means there are limited resources to support research, capacity

and skills development. This inhibits the ability to predict, prepare, respond, learn and adapt to be more resilient and safer in the face of a changing climate.

Without action, the risk to staff, schools, community groups & families will increase and there is an increased probability that people will avoid engaging with the outdoors – with consequent negative health and well-being impacts.

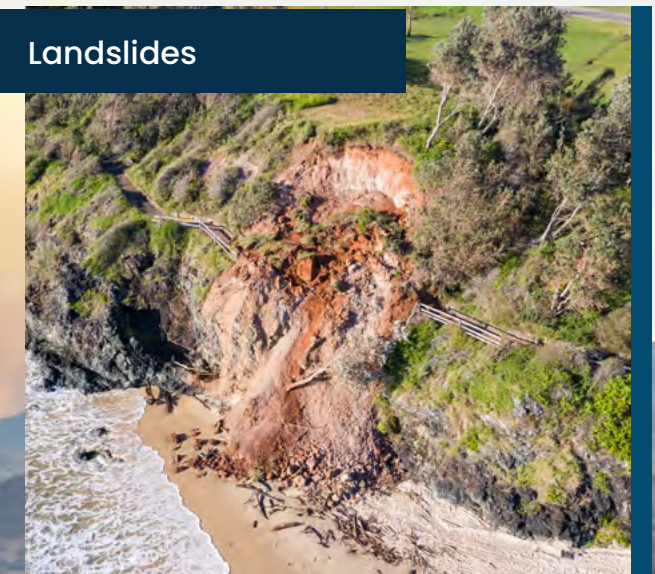
Flooding



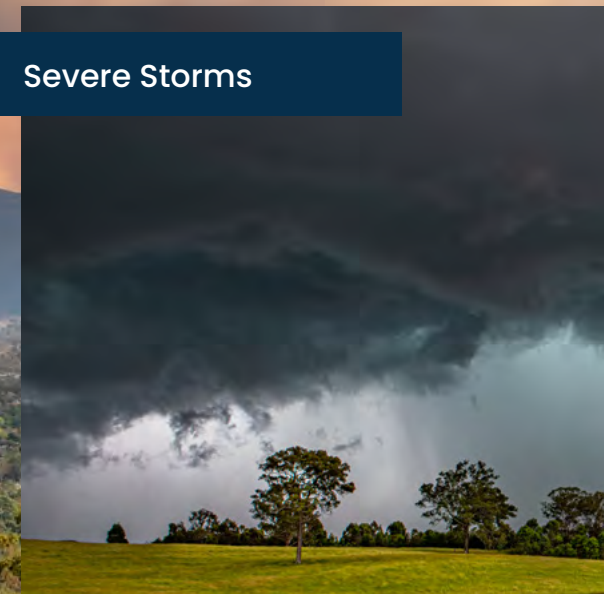
Erosion



Landslides



Severe Storms





## KEY OUTCOMES

### The key outcomes of the NatCORR include:

- In the near term (<1 year) – Increases in capacity (resources, tools, physical infrastructure and technology) and capability (knowledge, skills etc; improvements in sector practices; building relationships and networks across the sector and with key public and research partners).

Increases in the capacity predict risk & exposure; plan for & mitigate risks; respond to events; learn and adapt; strengthening of the sector's collaboration, voice & reputation.

- In the longer term (3–5 years) we will see increases in the resilience of organisations across the sector, the safety of staff, clients and communities in the outdoors and reductions in risk in the outdoors.

## THE POSITIVE IMPACT

When these outcomes occur among outdoor education and practitioners, our participants and communities will:

- Be able to rely on practitioners being there to help them learn and support them through extreme events
- Feel safer
- Be more confident to continue to explore the outdoors despite a changing climate

And ultimately, all Australians and visitors, wherever they live and whatever their age, ability and cultural background will be able to continue to enjoy and benefit from being in the outdoors and feel safe in doing so.

We have defined an impact framework including Theory of Change, Guiding Principles and Monitoring and Reporting approach that will provide essential insights into our approach, progress and success. As part of this process, we have identified essential metrics to be monitored and understood the risks we must manage to succeed. We have also undertaken a baseline survey which has informed our approach.





## NATCORR'S PLAN FOR SUCCESS

NatCORR's activities will drive a step-change across 4 Key Workstreams:

1. Weather and environmental conditions – monitoring & understanding
2. Risk management, incident & emergency response
3. Impact & mitigation
4. Economic & social resilience

## CREATING CHANGE

To achieve this step-change NatCORR is bringing practitioners together through a co-design process to:

- Convene and coordinate events, collaborations and communications across the sector, ensuring all are included, to design and deliver networks, knowledge, systems and tools.
- Partner with key third parties including BOM, government, SES, emergency services etc. to ensure we have the best available knowledge and practices.
- Design and implement analytical and predictive tools, insights; communicating and providing access to them, for all to use and learn.
- Minimise impacts on the environment and support efforts to restore nature wherever we work.
- Develop and implement training, professional development, guidelines and standards that ensure we are sustainable and provide safe and fulfilling experiences that connect people with nature.
- Support local communities and environments to recover from disturbances including floods, fires etc.

We are also constructing a physical home for NatCORR where networks can gather, learning can take place and communities can come to work with us. This new location in Tharwa in the ACT, only 30 minutes from Canberra and at the gateway to Australia's high country will offer a centre to gather, with dining and seminar rooms to support collaboration and professional development.



EDUCATE



PARTNERS



TOOLS



RESTORE



TRAINING



SUPPORT



# PROGRAM DELIVERY

## Governance

NatCORR’s development will be incubated within Outward Bound Australia and overseen by OBA’s Board.

The OBA Board will be aided by a NatCORR Advisory Committee which will draw on relevant representation across the stakeholders to optimise the establishment and performance of NatCORR. The Committee will maintain a combination of knowledge, expertise and competencies with a diversity of experiences, perspectives, information, connections and skills to carry out its advisory functions.

## Timeline

The NatCORR project commenced with the Federal Grant Agreement in July 2022. Key activities and milestones are articulated in a detailed implementation plan, incorporating:

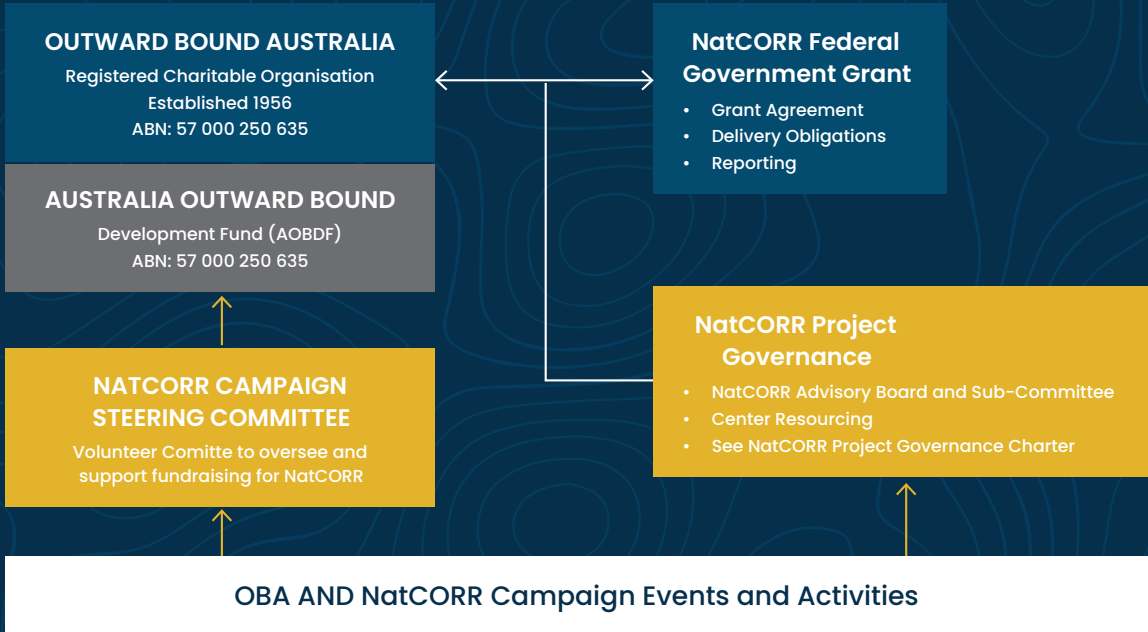
- Project set-up and launch: July – Dec 2022
- Program and activity design: Jan – July 2023
- Communal Centre design and planning approval: Jan – Dec 2023
- Program Delivery: July 2023 onwards
- Communal Centre construction: Jan- Dec 2024
- Review, Phase 2 business plan and NatCORR Centre opening: Jan – March 2025

## Budget

	Federal Grant	Seeking additional funds
Building	\$3.5m	\$3.5m to meet full building costs
Centre Resourcing	\$800k	\$800k to support resourcing
Program / Activities Design & Delivery	\$700k	\$700k to enhance scope and fulfill program of activities beyond initial establishment phase
TOTAL	\$5m	\$5m

# CAMPAIGN GOVERNANCE

AOBDF is a charitable 100% subsidiart of OBA - with Deductible Gift Recipient (DGR) status for tax deductible donations





**JOIN NATCORR** in making outdoor adventures in Australia safer in the face of an ever changing climate.

## INVESTING IN NATCORR

### Key Value Proposition

- We have an obligation to staff, communities and all who access the outdoors to ensure they can do so safely and without unnecessary risk.
- An outdoor sector that is strong and resilient is able to support everyone to access and benefit from outdoor experiences.
- A well-prepared outdoor sector will be able to support communities to prepare for, respond to and adapt in the face of climate change.
- Preparing now, before the situation gets worse, will reduce the future cost of change, minimise damage and, hopefully avoid loss of life.

### Why NatCORR?

- We want all Australians and visitors, wherever they live and whatever their age, ability and cultural background to be able to enjoy and benefit from being in the outdoors.
- This transformational initiative helps outdoor practitioners to be better able to predict, prepare for, mitigate & respond to events. They will learn and adapt to be more resilient and safer in the face of a changing climate, in order to support communities and individuals in the outdoors.
- This is a first-of-its kind initiative globally and our approach will help outdoor practitioners in other countries and regions to adapt our model to their environment.

### Progress to date

- Federal Government funding secured
- Stakeholder engagement and communications commenced
- First co-design forum held with 80 Australia-wide participants from across the sector
- Governance Charter and Guiding Principles developed
- Building design work commenced
- NatCORR Project Launch Event

## FUNDING OPPORTUNITIES

### NATCORR BUILDING

Capital contribution to the development of a communal centre to host conferences, workshops, seminars, training & networking activities

### INSIDE OUR NEW COMMUNITY HOME

OBA is building a multi-purpose Communal Centre to be built at it's site at Tharwa in the ACT that NatCORR will also benefit from. Located at in the National Capital, in a practice-based location, it is perfectly situated to create the networked collaborative hub associated with NatCORR.

The Communal Centre will house a dining and events hall, meeting spaces, and reception area in a new standalone building with indoor/outdoor facilities to host large groups. It will function as the "front door" and central gathering facility for the OBA campus.

The design is being completed by award winning professionals, Sally Draper Architects (SDA) and TCL Landscape Architects.

The Centre will cost \$5.7m and is planned to open in 2025. To date OBA has secured \$XX towards the cost of this building.

### 4 KEY WORKSTREAMS

Support research and program activities across:

1. Weather & environmental conditions
  - monitoring & understanding;
2. Risk management, incident & emergency response;
3. Impact & mitigation;
4. Economic & social resilience

### KEY EVENTS

Sponsorship of conferences, workshops & training across the 4 Key Workstreams



The Communal Centre planned site



# WALK OF CHANGE

1

**THE MISSION**  
We want all Australians and visitors to be able to enjoy and benefit from being in the outdoors

2

**BENEFITS**  
These benefits include education, mental & physical health, well-being, connection to nature and the local community.

Outdoor education & recreation practitioners provide a safe place to learn about & experience the outdoors, empowering others to explore the environment themselves

3

**PRACTITIONERS**

**ISOLATED PRACTICES**

4

Practitioners draw heavily on training, experience and local knowledge

6

**LIMITATIONS**  
As a small, dispersed sector with many non profits and charities, there are limited resources to support research, capacity and skills development

**ISOLATED PRACTICES**

Remote and dispersed bush locations can be isolating, limiting learning and support

5

**INCREASED DANGERS**

At the same time bushfire, floods and extreme weather events are increasing in number and impact in Australia.

7

12

**DRIVING CHANGE**

Its activities will drive a step-change across 4 key workstreams:  
1. Weather & environmental conditions – monitoring & understanding;  
2. Risk management, incident & emergency response;  
3. Impact & mitigation; and  
4. Economic & social resilience

We are also building a Communal Centre as a physical home for NatCORR, where networks can gather and learning and problem solving can take place.

8

**UNPREPARED**  
There are concerns that there are not the resources to predict, prepare and adapt to volatile climate events that are growing in scale and frequency

11

**RESILIENCE**  
With NatCORR, we will be better able to predict, prepare for, mitigate and respond, through learning and adapting to be more resilient and safer in the outdoors in the face of a changing climate.

13

**CONFIDENCE**

When outdoor education and practitioners can do this, our participants and communities will:

- Be able to rely on practitioners being there to help them learn and support them through extreme events
- Feel safer
- Be more confident to explore the outdoors despite a changing climate

This means that... all Australians and visitors, wherever they live and whatever their age, ability and cultural background are able to enjoy and benefit from being in the outdoors and feel safe in doing so.

**THE FUTURE**

14





# Your **Support** is Critical To Advance This Work



Partner with us to bring the full potential of the **NatCORR** to life.

We require a matching \$5m to deliver on the vision of NatCORR.

We invite the support of corporate partners, philanthropists, trusts and foundations who are compelled by the importance of this initiative to ensure all Australians and visitors, wherever they live and whatever their age, ability and cultural background are able to enjoy and benefit from being in the outdoors and feel safe in doing so.

## OUR TRACK RECORD IN DELIVERING IMPACT



Outward Bound Australia has provided outdoor experiential learning programs for nearly 500,000 people over our 67-year history. The impact of these programs can be life changing, building confidence and connections that can support a 'reset' in life goals and pathways. We often find our alumni from years ago will share stories of their OB adventure with detailed recall, as if it was yesterday!

There is an extensive international research portfolio on the efficacy of Outward Bound programs. Our current outcome impact reports evaluate self-confidence, resilience, social competence, compassion and environmental responsibility.

Over the last 5 years, we have achieved on average:

**85**  
PROGRAMS

**3800**  
PARTICIPANTS

**\$915,000**  
GRANTS AND DONATIONS

We are proud of our transformational hard work through the challenging time of bushfires and COVID. OBA is now well positioned for growth, innovation and service to the community.

### NATCORR SUPPORTERS



#### Foundations and Trusts:

- Vincent Fairfax family Foundation
- Douglas Family Trust
- Fidelity International
- Thyne Reid Foundation
- James N Kirby Foundation
- Upotipotpon Foundation
- Future2 Foundation
- Black Dog Ride Australia



#### Corporate Partners:

- Boral
- Toyota WA
- Australian Rural Leaders Foundation
- GMA Garnet
- Aurizon
- Mutual Trust
- Mainfreight



#### Community Partners:

- STARTTS
- Mirabel Foundation
- MensLink
- Clontarf Academy
- Follow the Dream
- Kookaburra Kids
- Creating Chances
- Lions Club

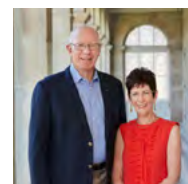






## What our Patrons, partners and donors have to say...

"We are delighted to become Patrons of Outward Bound Australia. Outward Bound brings out the best in people. They empower and challenge participants to reach beyond their limits. They nurture and encourage leaders – which is as vital today as it was 80 years ago when Outward Bound began. We are particularly attracted to the sense of community – once you participate in Outward Bound you are part of a local, national and international group of like-minded individuals. We both look forward to being part of and supporting that community as Patrons."



Outward Bound Australia Patrons:  
His Excellency General the  
Honourable David Hurley AC DSC  
(Retd) and Her Excellency Mrs  
Linda Hurley

"The Vincent Fairfax Family Foundation's 60th anniversary celebrated VFFF's long standing partnership with Outward Bound. Over their long history, Outward Bound has demonstrated leadership in the outdoors sector, paving the way and staying true to purpose, providing young people with opportunities to grow through adventure learning outdoors. Outward Bound's expertise, passion and track record in delivering life-impacting experiences make them a trusted partner."



"Outward Bound is the one of the oldest, most experienced and recognised brands in the outdoors in Australia. This positions them well to lead the collaborative initiative to establish the National Centre for Outdoor Risk and Readiness. The Outdoor Council of Australia (OCA) is delighted to be partnering with NatCORR on the important work of adapting and managing climate change risks in the outdoors. This will help safe guard the future of camping and enjoying the great Australian outdoors for generations to come."



"You wont find many organisations that combine passion and professionalism as effectively as Outward Bound does. Their credentials are solid, and the impact their programs have on young people is lasting and research backed.

I have been inspired to run marathons to fundraise for Outward Bound programs for indigenous youth. We don't all need to run, but we do need to rally to support this important work, and to prepare and adapt to protect outdoor learning from the impacts of climate change."



John Atkin – Chair,  
The Australian Institute of  
Company Directors

## LET'S CONNECT FOR A PURPOSE

THANK YOU FOR TAKING AN INTEREST IN OUR WORK.

Please reach out to us for more information or to arrange a conversation about NatCORR. We would be delighted to share more about this important program.

Dr Loren Miller  
Co-Chair & Executive Director  
Outward Bound Australia

T +61 408 749 419

E [loren.miller@outwardbound.org.au](mailto:loren.miller@outwardbound.org.au)



National Centre for  
OUTDOOR RISK & READINESS







National Centre for  
OUTDOOR RISK & READINESS



Visit us online at [NatCORR.au](http://NatCORR.au)

